

Make your first line of defense
the intelligent choice.

Infinity2000™

T H E S M A R T W A L L ™

The ultimate
perimeter detection system.



 **INTEGRATED
SECURITY
CORPORATION™**

Infinity2000™

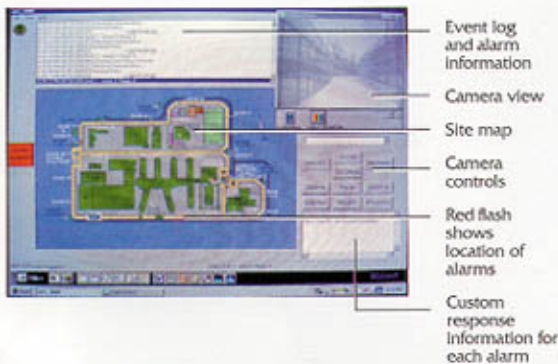
THE SMART WALL™

Give your fence the optimum in sense.

If your requirements call for the ultimate in perimeter security systems, you won't settle for less than Integrated Security Corporation's Infinity 2000 Series.

It's known as "The Smart Wall™" for good reason.

Its innovative software can monitor alarms from any device and is integrated with shock vibration fence sensor technology. The system software allows the adjustment of sensitivity individually by zone from the central computer keyboard. No field adjustment required.



Constant false alarms are a thing of the past.

Weather compensation settings can be fine-tuned individually by zone to minimize the number of environmentally-generated false alarms while maintaining nearly 100% probability of detection. Control can be either local or from virtually anywhere in the world.

The ISC Smart Wall can be installed on a variety of media including chain link, barbed wire and even concertina wire/razor ribbon fencing. What's more, unlike some systems, Smart Wall sensors are not affected by conditions like tautness, vegetation, zone length, environment or weather. The system eliminates the need for expensive on-going maintenance.



The sensor is a weather sealed, UV resistant, high impact injection molded assembly permanently attached to the sensor cable at regular intervals. The sensor can be mounted in any position and will respond to vibration in any axis.



The weather station monitors wind speed and precipitation intensity and constantly updates the system software to help eliminate the generation of environmentally induced false alarms.



Infinity2000™

T H E S M A R T W A L L™



The Infinity 2000 system provides a color graphic display of the facility on a central monitoring computer. The system has flashing alarm zones, custom digital audio annunciation of alarms, command and control capabilities for CCTV, gates and doors, as well as data log retention of alarm activity and weather compensation by zone.



The Infinity 2000 Smart Wall sensors can be mounted on almost any surface including chain link or welded mesh fencing, razor ribbon, barbed wire and even concrete walls.

So smart, it's easy to operate.

Sophisticated as it is, the Smart Wall is easy to use. All system functions are controlled from a central PC that works with Windows 2000/NT software. The user-friendly system can automatically schedule control of alarms, doors, duress alarms, pagers, relays and more. All information is displayed in easy-to-read high-resolution graphics.

The Smart Wall's "at a glance" technology lets the operator view the site map, event log, alarm screen, control doors, control cameras and monitor perimeter security all at the same time. Event logs record all system activity to the hard drive and printer. The system keeps a password secured log of all data and provides real-time custom printed reports for reference.

The Smart Wall can display and record CCTV video on screen, essential in determining the cause of an alarm.

The Smart Wall can grow with you.

The Smart Wall is flexible enough to expand with your needs. The computer controlled system can operate anything from one facility to a thousand locations and beyond.

No wonder it is currently in use at correctional facilities, military bases, nuclear power plants, railroad yards, automobile plants, utilities and telecommunications facilities.

The Smart Wall is available as a complete system with PC and software, or without a PC as an adjunct to your present system.

Either way, make your first line of defense the most intelligent choice available. For more information or a no-cost demonstration of the Infinity 2000, the Smart Wall, contact Integrated Security Corporation.

Infinity2000™

T H E S M A R T W A L L™

Here's what makes the Infinity 2000 Smart Wall™ the intelligent choice.

- Puts an end to constant false alarms - individual weather compensation settings per zone to differentiate weather and human invasion.
- Sensor sensitivity settings individually per zone.
- Detects environmental changes from wind and precipitation and supplies necessary data to the system processor.
- Can be installed on virtually any type of fence, concertina, barbed wire, wrought iron, and even concrete walls.
- Easy to operate - Windows 2000/NT software; user friendly controls with keyboard, mouse, touch screen and stylus inputs.
- On screen video capture, with CCTV camera command and control.
- High resolution graphics, increased site map detail with video capture.
- Custom database report generator assists in security management.
- At-a-glance system configuration keeps all relevant security management information on a single screen in easy sight.
- Real-time, mission-critical, multi-tasking operating system ensures optimum alarm detection and reporting.
- All alarms reported in CD-quality audio.
- Scalable to grow with your needs - from one site to 1,000 or more.
- Program each alarm to display custom officer response instructions.
- Powerful and flexible software provides superior facility and security management capabilities.
- Easily integrated with peripheral equipment for local and remote operation of CCTV, duress, pagers, mobile maps, relays, lights, etc.
- Automatic scheduling of alarms, doors, gates, etc.
- Software based bi-directional dual-domain and alarm shunt capabilities.
- Ability to communicate to multiple remote sites via modem or other communication.
- Ability for operator to type in custom alarm cause.
- Instantaneous and pre-programmed display of real-time wind precipitation values.

Here are specifications for the Infinity 2000 Smart Wall™

Power Input Options: 120/240 VAC, 24 VDC, battery backup.

Enclosure: NEMA 4 or indoor, lockable with tamper switch.

Operating Temperature: -55 to +155 degrees Celsius. Wider temperature ranges available.

Lightning Protection: Semiconductor surge suppressors.

Input Points: Unlimited

Maximum Zone Length: 27,000 feet, each zone, fully supervised.

Output points: Form "A" relay contact outputs provided for each zone, plus tamper alarm relay, communication failure alarm relay, power failure alarm relay and one general output relay.

Hardware Protocol: RS-232 to host computer, RS-485/422 controller to field transponders.

Controls: Dip switch selectable addresses, modem select, wind and rain compensation enabler, reset switch.

LED Indicators: Power on.

Connections: Compression type terminal connectors, RS-232 (DB-25), RS-485 controller to field transponder.

Remote Communications: System capable of remote communications via modem to host computer. RF Link/Microwave available.

Sensitivity Control: Wind and precipitation compensation software adjustable individually by zone. No field adjusting of transponders required. Sensor sensitivity adjustable individually by zone. No field adjustments required.

Peripherals: WX-75M Weather Unit detects environmental changes resulting from wind or precipitation. Programmable logic controller interface for relay command and control.

Sensor: Weather sealed, UV resistant, high impact injection molded assembly permanently attached to the cable at regular intervals. Sensors can be mounted in any position and will respond to vibration in any axis. The sensor detection chamber provides internal mil. spec. gold plated contact points. Chamber is weather sealed and maintenance free.

Sensor Cable: 22 AWG, 9C, shielded EMI/RFI protected. Rated for direct burial.

Infinity2000™

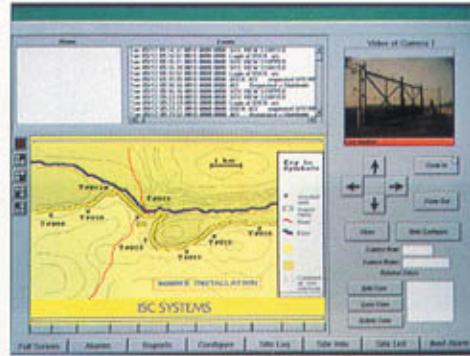
THE SMART WALL™



The Infinity 2000 Smart Wall can secure almost any perimeter including train yards and trucking facilities.



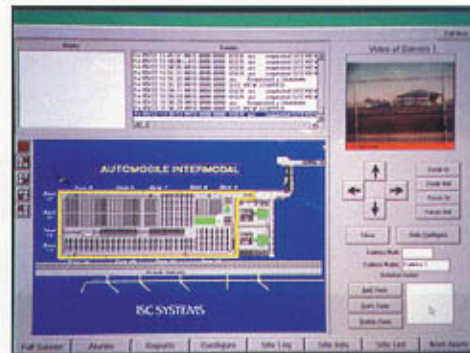
Independent testing of The Infinity 2000 Smart Wall enables us to maintain our high quality and reliability.



Border Installation



Prison Installation



Intermodal Installation

The Infinity 2000 Smart Wall PC displays high resolution detailed sight maps, closed circuit television video and camera controls, warning flash on map locating which zone has indicated an intrusion, wind and precipitation indications, and many other pertinent details.



2001 Dallavo Drive Suite 3C
Walled Lake, MI 48390
Phone: 248-624-0700 Fax: 248-926-9070